



University  
of Southampton

# Estate Strategy & Sustainability

Professor Adam Wheeler  
Deputy Vice-Chancellor

February 2007



## Overarching Strategy

### Top Ten Research-Intensive University

#### Research

- Widest range of Engineering & Science excellence in the UK
- Excellence in Modern Languages, Law and Medicine
- Recent Strategic Themes: Life Sciences Interface, Neuroscience, Nanotechnology

#### Education

- Driven and informed by world-class research
- Designed and delivered by world-class teachers
- Focused on tomorrow's leaders, innovators and entrepreneurs

#### Enterprise

- Spinout Companies: Southampton Photonics Inc, Synairgen,...
- Executive development programmes & Consultancy

#### Strategic Partnerships

- NHS, NERC, ONS, RR, IBM, BAE Systems, LR, QinetiQ, DSTL

#### Internationalise!



## We need an estate which ...

- Is aligned with academic ambition to deliver world class education, research and innovation.
- Serves as a visual reference to this ambition.
- Will sustain the University's development.
- Provides competitive advantage in a global context.
- Is fully compliant with legal obligations.



## Principles of the Estate Strategy

- **Coherent and consistent development of estate**
  - Raise profile of the University;
  - Clarity of expectation of staff and students across all campuses.
- **Fully integrated transport and parking infrastructure**
  - Increasing demand on parking and access constrains development;
  - Seek alternatives; lead in environmentally sustainable policy.
- **Develop, manage and service academic space infrastructure**
  - Ensure effective and efficient use of a key resource;
  - Education of the future will need innovative/flexible delivery.
- **Develop a variety of distributed and central social spaces**
  - Foster broad intellectual and social interaction.



# Principles of the Estate Strategy

- **Sustainable buildings & services infrastructure**
  - Current infrastructure at capacity;
  - Current building expensive and difficult to adapt
  - Flexible enough to meet projected future need
  
- **Environmental Sustainability**
  - New buildings: BREEAM
  - Waste management
  - Energy Conservation
  
- **Transparent allocation of resource to both capital and maintenance programmes**
  - Prioritise expenditure according to strategic aims;
  - Recover costs from recurrent allocations.
  
- **Seek appropriate contribution of resource from partners**
  - Diversification of income streams;
  - Attract significant partners via brand and advancement agenda.



# Sustainable Development

- CHP & district heating scheme
- Carbon management programme
- Automatic energy monitoring project
- BREEAM Excellence Standard
- Environmental Management System ISO14001 at NOCS
- Recycling scheme
- Travel plan – Unilink:- car parking/alternate





# £236M Capital Programme

**Demanding programme to drive strategic change**

**Boldrewood Redevelopment is the key**

- School of Management
- Institute for Life Sciences
- Hospital
- Faraday
- Mountbatten

**Major step change in quality, functionality and sustainability of estate**



# Boldrewood & Highfield Campuses





## Projects: Boldrewood

### Professional Campus

- New School of Management at its heart
- Lloyds Register Group on Avenue/Burgess Road frontage
  - Share School of Management facilities
  - World-class research, expert knowledge & international business experience
  - Research synergies: Maritime, Transport, Risk, ...
- Subsequent developments evolutionary
- High quality buildings and garden landscape
- Gateway to University & City

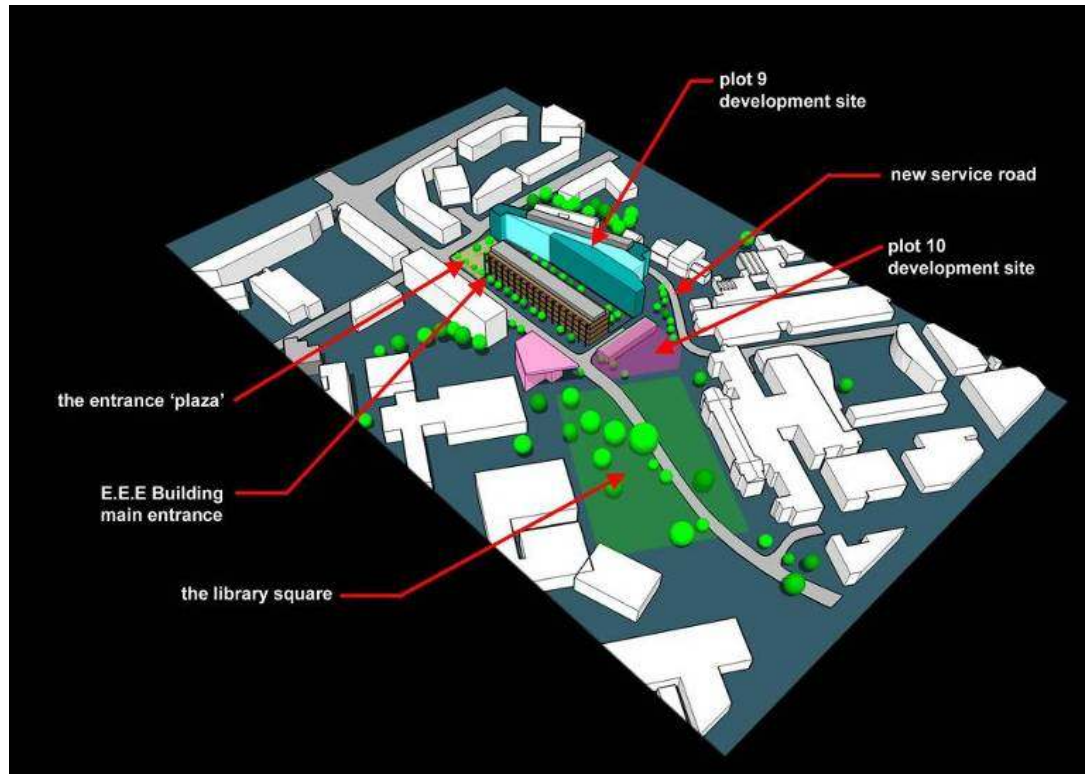


## Institute for Life Sciences

- Builds on strategic investment and progress in Life Sciences & Neurosciences
- Focus of cross disciplinary research for FESM & MHLS
- Home of School of Biological Sciences
  
- Also an opportunity to:
  - Improve visitor experience to Highfield
  - Improve quality of East Highfield
  - Address access and parking issues



# Institute for Life Sciences

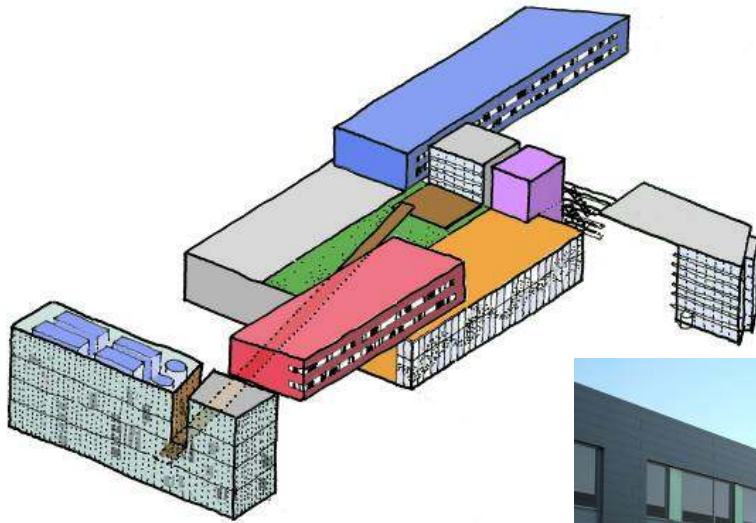


# Mountbatten Rebuild

- Key clean room complex burnt down October 2005
- Home of University's most prestigious research
- £55M redevelopment
- Integrated clean room, optical laboratory and offices
- Environmental challenge!
  
- Naturally ventilated offices
- CHP extension



# Mountbatten Rebuild



# Summary

- Senior Management commitment to sustainability
- Strategic opportunities in ambitious capital programme
- Culture & business change
- Leading by example:
  - CHP
  - Faraday Building
  - George Thomas Building